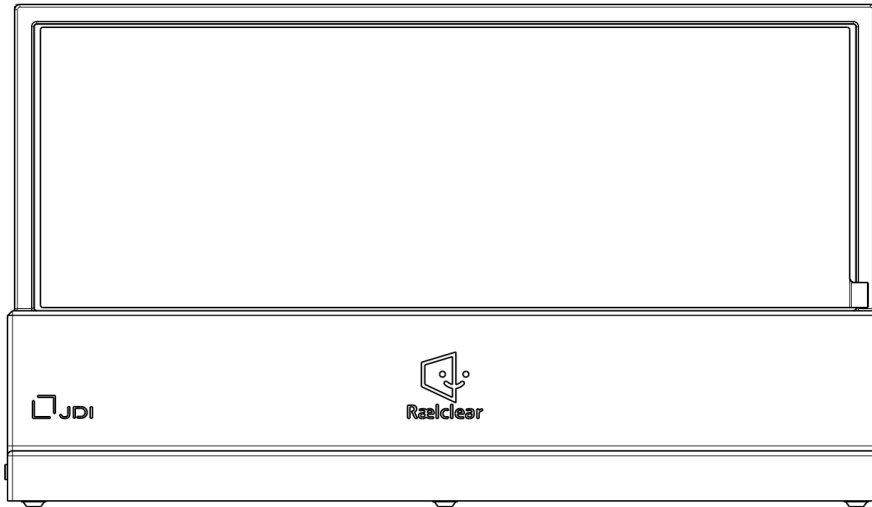




12.3inch Transparent Interface



User Manual

Contents




Precautions for your safety	• • • • • • • •	2
Handling Precautions	• • • • • • • •	3
Package Contents	• • • • • • • •	4
Product Introduction	• • • • • • • •	4
Connection	• • • • • • • •	5
Care & Cleaning	• • • • • • • •	7
Troubleshooting	• • • • • • • •	8
Specifications Summary	• • • • • • • •	9
After Service	• • • • • • • •	9

AC adapter is not included in this product.



Precautions for your safety

Precautions for safe use of the product are described. Please follow the instructions when using the product.


■Description of Danger, Warning and Caution signs

 DANGER	If this item is not observed, there is a high possibility of death or serious injury to a person.
 WARNING	Failure to observe this item may result in death or serious injury to a person.
 CAUTION	Failure to observe this item could result in minor injury to a person.








■Explanation of Graphic symbols

	“Prohibited” item that must not be done.
	“Instruction” item that must be done.



DANGER




- 
Never disassemble, modify or repair the product.
Failure to observe this may cause electric shock, fire, burns or malfunction.


WARNING



- 
Stop using immediately in case of malfunction or abnormality.
Turn off the power immediately and unplug the AC adapter from the outlet. Continue to use may cause electric shock, fire, or injury.
- 
Do not get wet or use in wet place.
Failure to observe this may cause electric shock, fire caused by electrical leakage.
- 
Do not keep packaging bags and parts within reach of infants.
Covering the bag or swallowing parts can cause choking.
- 
Do not block a vent of the product or place objects around the product that may interfere with heat dissipation.
Failure to observe this may cause fire.
- 
Do not touch the liquid (liquid crystal) leaking from the LCD panel.
When LCD panel is accidentally broken and the liquid crystal leaks, do not touch or inhale the liquid. In case of contact with eyes or mouth, immediately wash with running water for at least 5 minutes and seek medical attention.
- 
Do not use in places where it gets hot, such as heaters or heat appliances.
Failure to observe this may cause fire.
- 
Do not connect to equipment while the product is malfunctioning or abnormal.
If any abnormality is found in the product, disconnect the connected equipment immediately. Using while connected may cause fire or malfunction of connected equipment.

Handle the power plug and power cord correctly.

- 
When unplugging, hold the power plug and pull it out.
Pulling on the power cord may damage it and cause electric shock or fire.

- 
Do not use outlets that cannot be plugged in securely.
There is a risk of overheating, fire, or electric shock.
- 
Do not use an AC adapter that is not comply with “USB PD 45W” compliant.
There is a risk of overheating, or fire.
- 
Do not plug or unplug with wet hands.
Failure to observe may cause electric shock.


CAUTION

- 
Do not use for long periods of time on the lap, etc.
During operation, the enclosure part will heat up. Prolonged contact may cause low-temperature burns.
- 
Do not strike the LCD panel surface with a hard object.
The surface of the LCD panel is tempered glass, but there is a risk of breakage. There is also a risk of injury from broken glass.

Handling Precautions

■To prevent screen burn-in

Displaying the same screen for a long time may cause screen burn-in.

- Turn power off when not in use.
- Use the screen saver or power saving function of the connected equipment.

■Environment and conditions of use

This product is designed for general homes and office use. It is not intended for outdoor, commercial, vehicle, ship or aircraft use.

- When used at low temperatures, the color may not be displayed correctly, but this is not a malfunction.

■Beware of condensation

This product uses many precision electronic components. Avoid using the product with condensation as it may cause malfunction.

- When moving from a cold to a warm place, etc., allow sufficient time to make sure that condensation has disappeared before using the product.
- Do not use in areas subject to steam, vapor, or water.

■Handling

- Do not hold the LCD panel when moving the product. Also, do not apply impact or stress such as warping or twisting. It may cause display abnormalities or malfunctions.
- Do not strike the LCD panel surface with hard or sharp objects such as pens or tools. The surface of the LCD panel is made of tempered glass, but there is a risk of breakage.
- Do not use the product while lying on its side. It may cause damage or malfunction due to concentration of stress.

■Adherence of solvents and detergents

- Be careful not to get solvents or detergents on it. Especially on resin parts, there is a risk of deterioration, discoloration or peeling of the paint.

■AC adapter

AC adapter is not included in this product so please prepare by yourself.

USB PD(USB Power Delivery 45W) compliant AC adapter and power cable(USB-C cable) must be used. The supported rated output power must be 45W/60W/100W. Not work with 15W/27W products.

■HDMI cable

Please prepare by yourself according to your operating environment. Use a 4K compliant product (High Speed or higher). Use of other cables may cause image disturbance or other abnormal operations.

■Usage procedures

To prevent malfunction or abnormal operation, follow the procedure for unplugging and plugging in cables, turning the power on and off, etc. described in this manual.

■Supported equipment

Adapters to convert various interfaces to HDMI are available from various companies, but some equipment does not support with this product. See P.6.

■Lifetime of LED light source

The light source used in this product has a limited lifetime. In case the product was used for a long term the display brightness may lower, Finally it may cause flickers or does not light on.

■Others

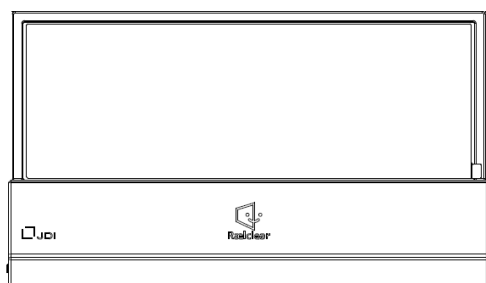
- It may have dark dots (dots that do not light on) and bright dots (dots that stay lit) on the display surface. As with general LCD panels, these occur at a certain rate and are not malfunctions or defects. Please note that they are not subject to repair or replacement.
- This product does not have the function to recognize speech or convert speech into text. Please install applications for such functions on your PC or smartphone and use them in combination with this product.

■About display image

- This product uses a different technology than most LCDs to achieve high transmittance and flickering may be felt. (individual differences exist.)
- When using this product, it is recommended that the room be well-lit.

Package Contents

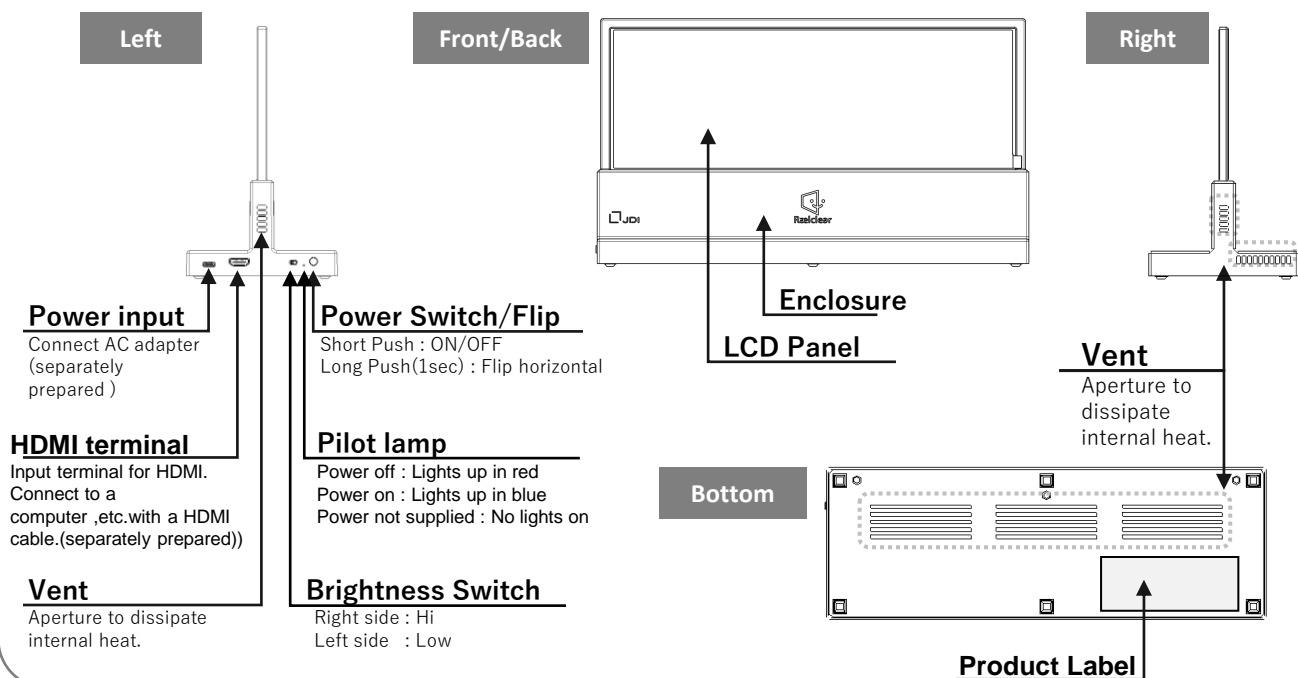
Transparent Interface 1pc



Items to be prepared by user

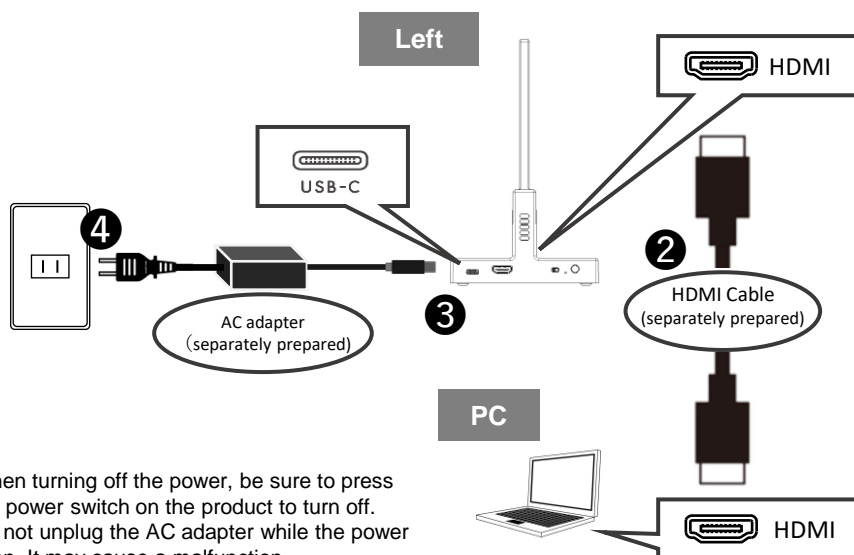
- ✓ **AC adapter and its USB Type-C output cable.**
Use a USB PD complied products.
Moreover, the supported rated output power must be 45W, 60W, or 100W.
Not work with 15W or 27W products.
- ✓ **HDMI cable**
Use a 4K compliant product (High Speed or higher) for HDMI cable.
- ✓ **PC, iPad, or iPhone**
HDMI conversion adapter may be needed if the device doesn't have HDMI output. For more information, please see page 6.

Product Introduction



Connection (example on PC)

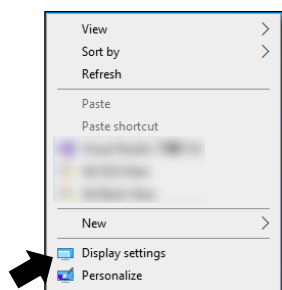
- 1 Turn off this product and PC.
- 2 Connect the product to the PC.
- 3 Connect AC adapter to the product.
- 4 Connect the AC adapter to the power outlet.
- 5 Power on the product and the PC.



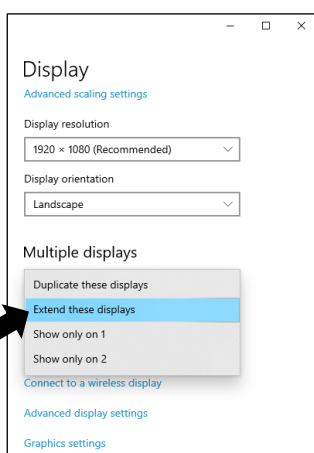
Tip : It is more convenient to use your PC's display setting in "Extended Mode".

How to set "Extended Mode". (Example on Windows OS.)

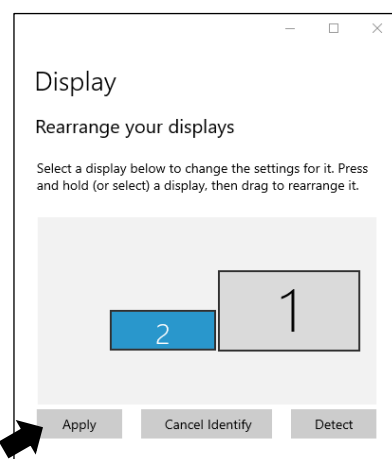
Right click on an empty area on the PC desktop. Select "Display settings" from the menu that appears.



Select "Extend these displays" from "Multiple displays".



Adjust the position of screen "2" with "Rearrange your displays" to match the position of the PC and the product, and click "Apply".



Tip : When this product is connected to a smartphone or tablet, it will be in mirroring view. To display in full screen on this product, a suitable application is required.

Example of Connection with Various Equipment

	Video source		Equipment which connect to the product	Example of connecting equipment *2
Cable connection	PC	HDMI	HDMI cable	—
		USB Type-C *1	HDMI Conversion adapter + HDMI Cable	Apple “USB-C Digital AV Multiport adapter”
	iOS terminal	Lightning	HDMI Conversion adapter + HDMI Cable	Apple “Lightning - Digital AV adapter”
		USB Type-C	HDMI Conversion adapter + HDMI Cable	Apple “USB-C Digital AV Multiport adapter”
	Android terminal		Currently, no devices that have been confirmed to work.	
Various video equipment			Currently, no devices that have been confirmed to work.	

- * 1
- Must have an interface that supports video output, such as Thunderbolt3.
- * 2
- Example of equipment that have been confirmed to work in our trials, but are not guaranteed to work.
Please apply the latest version of the OS and firmware version of the equipment.
Use 4K-compliant HDMI cables.
Depending on the connected equipment, there are cases where it takes about 30 seconds from the time of connection until the display appears, or where sandstorm like display appears.

Tip : To be used as a “Real-time speech-to-subtitle” device.
Please install an application that has a speech recognition function on your PC or smartphone and display the screen of the application on this product.

Note :
Before using an application, please read the terms of use of each application carefully by yourself and use it at your own risk. Communication fees may be incurred when downloading or using applications. These are to be borne by yourself.

Care & Cleaning



CAUTION


Be sure to unplug the AC adapter from the power outlet and unplug the HDMI cable before taking care of. Do not remove the back cover or disassemble the product.

- Wipe gently with a soft, clean cloth. For hard-to-remove stains, wipe gently with a soft cloth moistened with a small amount of water.
- When using alcohol, wipe lightly with a small amount on a soft, clean cloth.
- Do not use solvents or detergents such as benzine or thinner.
- Vacuum dust from the vent regularly (about once a month). Continued use with the clogged vent will cause overheating inside the enclosure, resulting in malfunction or abnormal operation.
- Do not apply strong or bending force to the LCD panel part. It may cause display unevenness.

Troubleshooting

Before contacting us for repair, please read this section carefully and confirm the following.

Condition	Possible reasons	Possible actions
Nothing appears on screen when power on.		
Pilot lamp is no lit.	AC adapter not firmly plugged in.	Please reinsert the AC adapter correctly.
	Using USB PD non complied AC adapter or power cable(USB-C cable)	Please use USB PD complied AC adapter and power cable
Pilot lamp is blinking.	It could be a malfunction.	Unplug the AC adapter from the power outlet and unplug the HDMI cable from the product, then contact us.
Display is partially distorted, or colors are abnormal.	HDMI cable is not 4K-compliant.	Please use a 4K-compliant HDMI cable.
"NO INPUT SIGNAL" is displayed after power on.	Your equipment is not outputting a signal suitable for this product.	Please check the video output setting of your equipment.
"UNCONNECT ERROR" is displayed after power on.		
	HDMI cable is not securely plugged in.	Please reinsert the HDMI cable correctly.

- The enclosure part will become warm during use, but this does not indicate malfunction.
(Do not use on the lap, etc. for long periods of time.)
 - Not confirmed to work with Android devices at this time.
 - When using USB Type-C, please confirm in advance that the USB Type-C of your equipment has video output capability. USB Type-C equipment that do not have a video output function cannot output video to external monitors, including this product.
 - Depending on the image to be displayed, the display may have a rough appearance, but this is not a malfunction.
- If the problem remains unresolved,
Please contact us through our inquiry website.
<https://www.webcoms.jp/jdi/eng/form.php>
- 

DANGER

Never attempt to disassemble, repair, or modify the product by yourself.

Specifications Summary

Model name	LAM123M860B
Power source	Compliant with USB Power Delivery 45W
Power consumption	18W
Product dimensions	(W)351 × (D)120 × (H)201 [mm]
Weight	1.1kg (AC adapter is not included.)
Resolution	1440 × 540 [pixel]
Refresh rate	60Hz
Maximum number of colors	4096 colors

* Product specifications are subject to change without notice.

After Service

●Warranty period

One year from the date of purchase.

●Before contacting us for repair

If a problem is not resolved after checking “Troubleshooting”(page.8), stop using the product, unplug AC adapter from the power outlet, and unplug the HDMI cable from the product, then contact us through our inquiry website.

●Inquiry form website URL

<https://www.webcoms.jp/jdi/eng/form.php>

●Warranty Policy

Even within the warranty period, repair will be charged in the following cases.

- (1) Malfunction or damage due to misuse, repair or modification by the customer.
- (2) Malfunction or damage caused by transportation, moving, dropping, etc. after receiving the product.
- (3) Malfunction or damage due to fire, earthquake, flood, lightning, or other natural disasters.
- (4) Malfunction or damage when used for purposes other than general home use (e.g., long hours of commercial use).
- (5) Malfunction or damage when equipped in a vehicle, ship, aircraft, etc.
- (6) Malfunction or damage due to abnormal voltage, use of unspecified power supply, etc.

Japan Display Inc.

Address : Landic 2nd Bdg., 3-7-1, Nishi-shinbashi, Minato-ku, Tokyo, 105-0003, Japan
Phone : +81-3-6732-8100
<https://www.j-display.com/>